



WEST HILL PARK SCHOOL

UNIFORM LIST FOR RECEPTION PUPILS

Boys

Autumn and Spring Terms

- *Grey short sleeve shirt
- *School V Neck Pullover
- *School Coat
- Mid grey trousers
- Grey socks
- *Navy Beanie Hat
- Navy gloves
- Optional Fleece Scarf
- Sturdy plain black shoes
- 1 pair Wellington boots
(plus 2 unnamed clothes pegs)
- *Optional school navy fleece

Book Bag

Optional Music Bag

Summer Term

- ^Grey short sleeved shirt
- *School V Neck Pullover
- Mid grey shorts
- Grey short socks
- Navy or black sandals (NOT open toes)
- *School sun hat - **mandatory**

Sportswear – All terms

- 1 pair navy school joggers
- *1 blue school polo
- 1 pair navy school shorts
- 1 pair black gym shoes (plimsolls) slip on type
- *1 navy drawstring bag – named 2 sides (PE kit)
- *School swim shorts
- *Swim hat
- Goggles
- Towel
- Waterproof Swimming Bag
- Brush or comb – kept in PE bag

Girls

Autumn and Spring Terms

- *Pink/white stripe blouse
- *School V Neck Pullover
- *School Coat
- *Grey pinafore
- Long grey socks or tights
- *Navy Beanie Hat
- Navy gloves
- Optional Fleece scarf
- Sturdy plain black shoes—not fashion style
- 1 pair Wellington boots
(plus 2 unnamed clothes pegs)
- *Optional school navy fleece

Book Bag

Optional Music Bag

Summer Term

- *Pink/white summer dress
- *School V Neck Pullover
- White ankle socks (not long socks)
- Navy or black sandals (NOT open toes)
- *School sun hat - **mandatory**

Sportswear – All terms

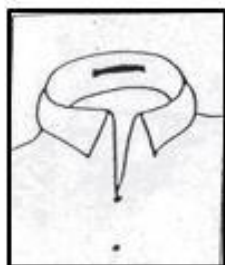
- 1 pair navy school joggers
- *1 pink school polo
- 1 pair navy school shorts
- 1 pair black gym shoes (plimsolls) slip on type
- *1 navy drawstring bag – named 2 sides (PE kit)
- *School swimsuit
- *Swim hat
- Goggles
- Towel
- Waterproof Swimming Bag
- Brush or comb – kept in PE bag

*Items from [Direct Clothing](#)

Pink shows personalised items available from [Giraffe Shop](#)

All items of clothing must be clearly and securely named, including all socks and underwear.

MARKING



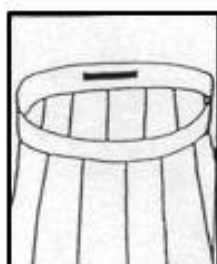
SCHOOL SHIRT / BLOUSE
JUMPER
SUMMER DRESS
BLAZER
SCHOOL COAT

Please mark inside collar.



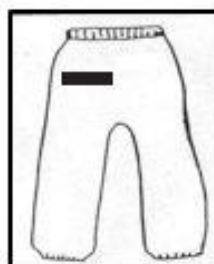
GAMES SHIRTS
POLO SHIRTS
SKINS
LAB COAT
FLEECE
BOILER SUITS
TRACK SUIT JACKET

Please mark on outside right
2½ inches down from seam.



SKIRTS
TROUSERS

Please mark inside at back of
waistband.



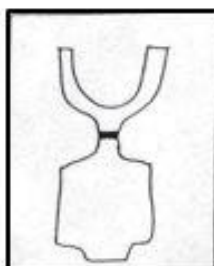
TRACK SUIT TROUSERS
SKINS

Please mark outside right
3 inches down from
elasticated waist.



PANTS
BOXERS
TIGHTS

Please mark inside at the
back of waistband.



SWIMSUIT

Please mark on the back,
either round one strap if a
crossover style or looped
around the centre section if
'muscle back' style.



SCHOOL SOCKS
SHORT / LONG

Please mark lengthways
inside top of sock.



SWIM SHORTS
BLUE / WHITE GAMES
SHORTS
SKORTS

Please mark on outside right.



GAMES SOCKS

Please mark lengthways on
inside of top, so that name
tape shows when the top is
turned down.

